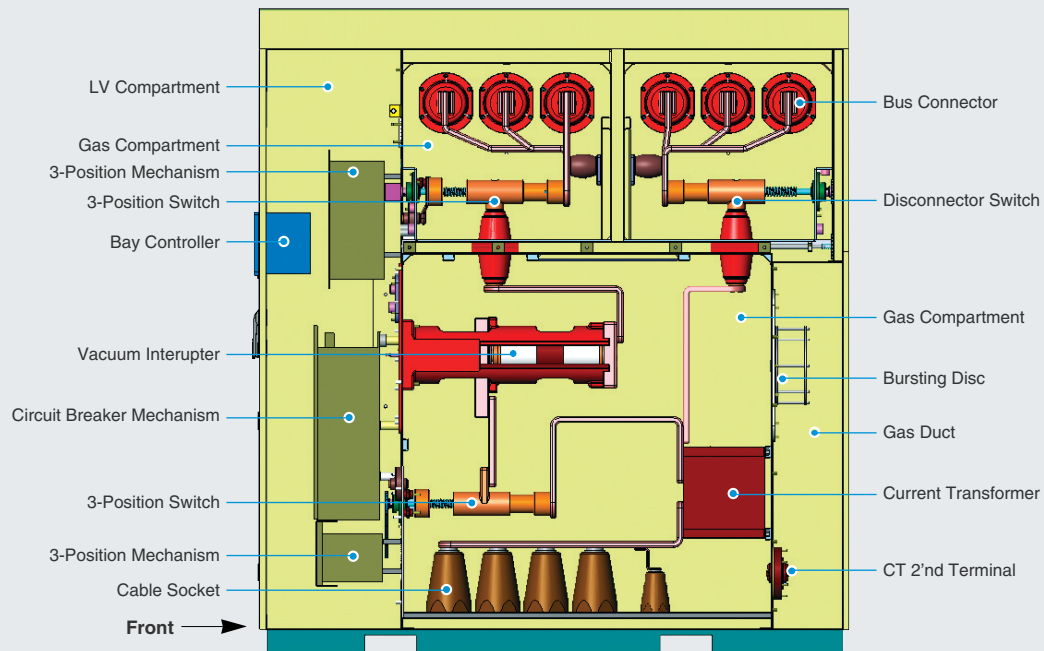


Cubicle Type Gas Insulated Switchgear : HMGS

- HMGS Cubicle type gas insulated switchgear is an integrated assembly of vacuum circuit breaker, 3-position switch, disconnecter, bus connecting system and control devices which are coordinated electrically and mechanically, for medium voltage power system.
- Applicable single, transfer & double bus system.
- The metal-clad design provides high reliability, easy operation and safety.
- The switchgear isolated by grounded metal plates prevents live parts from being exposed to the operator when door open.
- Compact design of very synoptical construction allows switching section to be added and dismantled in very short time without disconnection of busbar.
- The switchgear is available up to 38kV.
- The switchgear and all components are designed, manufactured and tested in accordance with the latest following standards :
 - IEC 62271-200
 - IEC 62271-100
 - IEC 62271-102
 - IEC 60265-1
 - IEC 62271-1 (IEC 60694)
 - ANSI C37. 20. 2
 - ANSI C37. 20. 7
 - ANSI C37. 04
 - ANSI C37. 06



Construction : HMGS-G82



Technical Data

Type	HMGS-G10 /11	HMGS-G81	HMGS-G82
Rated voltage (kV)	12	24 (25.8)	36
Maximum operating voltage (kV)	12	24 (25.8)	36
Rated power frequency withstand voltage (kV)	28 ¹⁾	70 ¹⁾	80
Rated lightning impulse withstand voltage (kV)	75	150	200
All voltage values apply for an insulating gas pressure, absolute, 20°C (bar)	1.0	1.0	1.0
Rated frequency (Hz)	50 / 60	50 / 60	60
Rated busbars current (A)	1250 / 2000	1250 / 2500	1250 / 2500
Rated feeder current (A)	1250 / 2000	1250 / 2500	1250 / 2500
Rated peak withstand current (kA)	65	104	104
Rated short-time current, 3s (kA)	25	40	40
Rated short-circuit breaking current of circuit breaker (kA)	25	40	40
Rated short-circuit making current of circuit breaker (kA)	65	104	104
Rated operating sequence	CO-15s-CO, 0-0.3s-CO-3min-CO ²⁾		
Closing time (ms)	ca. 65	ca. 75	ca. 75
Opening time (ms)	ca. 45	ca. 45	ca. 45
Breaking time	5 cycle	5 cycle	5 cycle
Insulating gas	SF ₆ ³⁾	SF ₆ ³⁾	SF ₆ ³⁾
Design pressure, absolute, 20°C (bar)	1.6	1.6	1.6
Rated filling pressure, absolute, 20°C (bar)	1.35	1.3	1.3
Minimum operating pressure, absolute, 20°C (bar)	1.2	1.2	1.2
Auxiliary voltage (V)	DC 110/125 ⁴⁾		
Degree of protection (IEC 60529, DIN VDE 0470)	High voltage live parts	IP 65	
	Low voltage compartment	IP 4X ⁵⁾	
Ambient temperature	Maximum value (°C)	+40	
	Minimum value (°C)	-5	
Altitude for erection above sea level ⁶⁾ (m)	1000		
Dimensions	Height (mm)	2300	2400
	Depth (mm)	1200 / 1720*	1760
	Width (mm)	550 / 700 ⁷⁾	600 / 800 ⁸⁾

1) Higher values as per international standards on request

2) Other sequences on request

3) Insulating gas : sulphur hexafluoride

4) Other auxiliary voltages on request

5) Higher values on request

6) Adaption required at greater altitude

7) 700mm with voltage transformer

8) 600mm for rated current 630A and 1250A
800mm for rated current 2000A and 2500A

* Double bus system